



Remote Head 12mm Analog Camera with
1/3" Type CCD and 5 Camera Head Choices

CS4300B



Key Features

COMPACT & LIGHTWEIGHT camera head solves space restriction problems, plus has excellent shock/vibration resistance

ELECTRONIC SHUTTER MODE allows the camera to capture very fast moving objects clearly and sharply

AUTOMATIC GAIN CONTROL permits camera to obtain optimal images constantly even when incoming light levels fluctuates

RESTART/RESET function, when set on, enables the camera to capture images at an arbitrary timing cued by external VD signal

SPECIAL SHUTTER & RANDOM TRIGGER SHUTTER allows the camera to capture images cued by external trigger input

SPECIFICATIONS

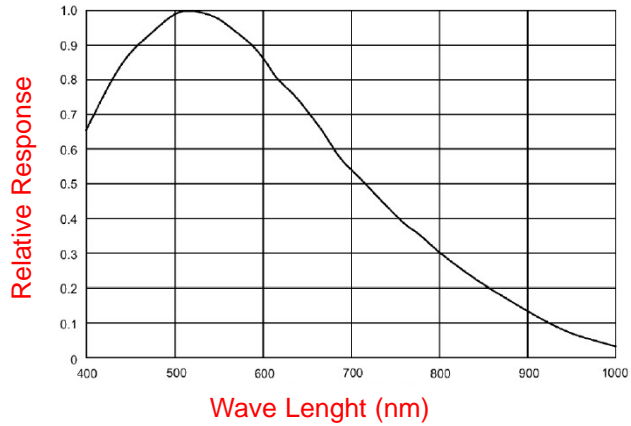
TV System	EIA
Total Pixels	811 (H) x 508 (V)
Active Pixels	768 (H) x 494 (V)
Video Output Pixels	756 (H) x 485 (V)
Scanning Area	4.8mm (H) x 3.6mm (V) (same as 1/3 Type CCD)
Scanning Lines	525 Lines
Scanning System	2:1 Interlace
Scanning Frequency	Horizontal: 15.734kHz Vertical: 59.94Hz
Sync System	Internal/External Auto Switch Over
Aspect Ratio	4:3
Video Output	VS 1.0V(p-p)/75 Ohm, 1 Line DC/AC coupled (inner SW setting)
Resolution	570 TV Lines (H), 485 TV Lines (V)
S/N Ratio	Standard: 50dB
Illumination	Standard 100 lx (F5.6), Minimum: 0.5 lx (F5.6)
Gain	Auto, STD, Manu
Gamma	ON (0.45)/OFF(1.0)Selectable by rear DIPSW setting
White-clip Level	857±40mV(p-p):SYNC non-include
Power Source	DC12V ± 10%
Power Consumption	3.0W
Electronic Shutter	OFF, 1/125, 1/250, 1/500, 1/1000, 1/2000, 1/4000, 1/10000, Slow Speed Shutter Mode
Restart	Provides ON/OFF switch inside of the camera
Power Source	DC12V±10%
Power Consumption	Approx.400 mA
Electronic Shutter	8 Step (OFF, 1/200, 1/500, 1/1000, 1/2000, 1/4000 1/8000, 1/20000 sec
Ambient Condition	0° to +40° C, Humidity less than 90%
Lens Mount	Special Mount (M10.5 PO.5 Male)
Dimensions	Camera Head: Phi-12 x 39.4(D)mm CCU: 110(W) x 28(H) x 156(D) mm
Camera Cable	3m, 5m
Weight	Camera Head: 11g, CCU: 450g

Typical Applications

Video image capture applications for the CS4300B include machine vision, factory automation, inspection, quality control, positioning and many others.

Typical Spectral Response

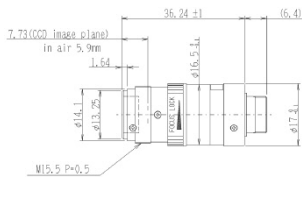
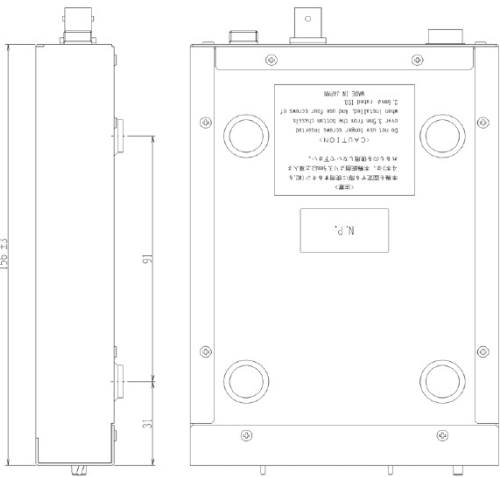
(lens characteristics and light source is not reflected in table)



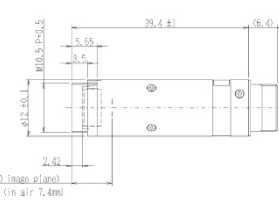
DC IN/SYNC CONNECTOR ASSIGNMENT

Camera Connector: HR10A-10P-12S (Hirose Denki)

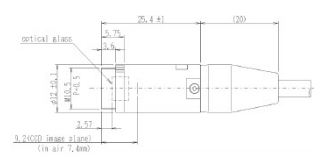
PIN	EXTERNAL SYNCHRONIZATION			INTERNAL SYNCHRONIZATION
	HD AND VD	VS/SYNC	Restart+Reset	
1	GND	GND	GND	GND
2	+12V	+12V	+12V	+12V
3	GND	GND	GND	GND
4	Video OUT	Video OUT	Video OUT	Video OUT
5	GND	GND	GND	GND
6	HD INPUT		HD INPUT	HD INPUT (*1)
7	VD INPUT	VS/SYNC INPUT	R+R INPUT	VD OUT (*1)
8	GND	GND	GND	GND
9	CLOCK OUT	CLOCK OUT	CLOCK OUT	CLOCK OUT
10	WEN OUT	WEN OUT		WEN OUT
11	TRIG INPUT	TRIG INPUT	TRIG INPUT	TRIG INPUT
12	GND	GND	GND	GND



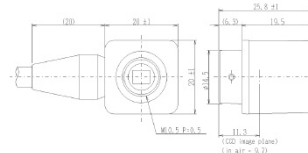
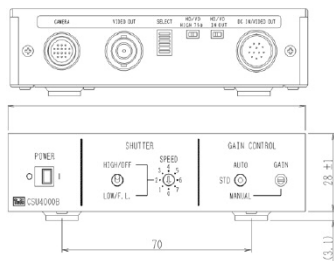
CSH4200B



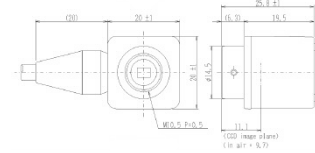
CSH4300B



CSH4301B



CSH4310BY



CSH4410BY



TOSHIBA TELI CORPORATION

7-1, 4-chome Asahigaoka
Hino-shi, Toyko 191-0065 Japan
TEL: +81-042-589-8771
FAX: +81-042-589-8774
www.toshiba-teli.co.jp

TOSHIBA TELI AMERICA, INC.

33 Hammond, Suite 211
Irvine, California 92618 USA
TEL: +1-949-770-TELI(8354)
FAX: +1-949-206-0210
www.toshiba-teli.com

